



Joint Council for
Qualifications^{CIC}

MALPRACTICE

What is plagiarism?

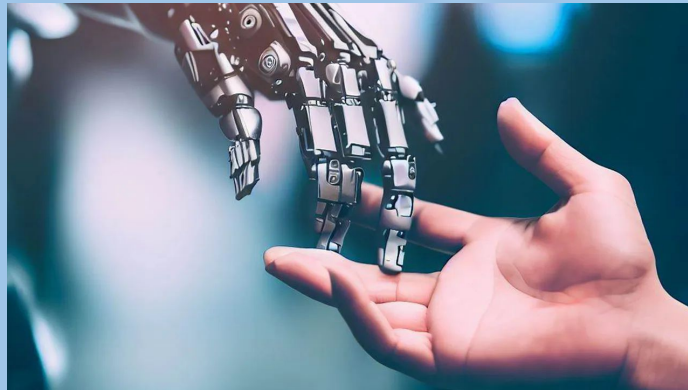
The JCQ Suspected Malpractice Policies and Procedures and Procedures define plagiarism as:
“unacknowledged copying from, or reproduction of, third party sources or incomplete referencing (including the internet and AI tools);”

What is collusion?

working collaboratively with other candidates;
this, and copying from another candidate in the
same examination session are also forms of
malpractice.

**‘students must submit work for assessments
which is their own’ JCQ**

AI



‘This means both ensuring that the final product is in their own words, and isn’t copied or paraphrased from another source such as an AI tool, and that the content reflects their own independent work’ JCQ

‘ Any use of AI which means students have not independently demonstrated their own attainment is likely to be considered **malpractice.**’ JCQ

Examples of AI misuse include, but are not limited to:

Copying or paraphrasing sections of AI-generated content so that the work is no longer the student's own

Copying or paraphrasing whole responses of AI-generated content

Using AI to complete parts of the assessment so that the work does not reflect the student's own work, analysis, evaluation or calculations

What happens if you get this wrong?



BANNED

‘The malpractice sanctions available for the offences of ‘making a false declaration of authenticity’ and ‘plagiarism’ include disqualification and debarment from taking qualifications for a number of years.’ JCQ

Teachers must not accept work which is not the student’s own.

Ultimately the Head of Centre has the responsibility for ensuring that students do not submit inauthentic work.

If AI misuse is detected or suspected by the centre and the declaration of authentication has been signed, the case must be reported to the relevant awarding organisation. The procedure is detailed in the JCQ

Suspected Malpractice: Policies and Procedures

(<https://www.jcq.org.uk/exams-office/malpractice/>).